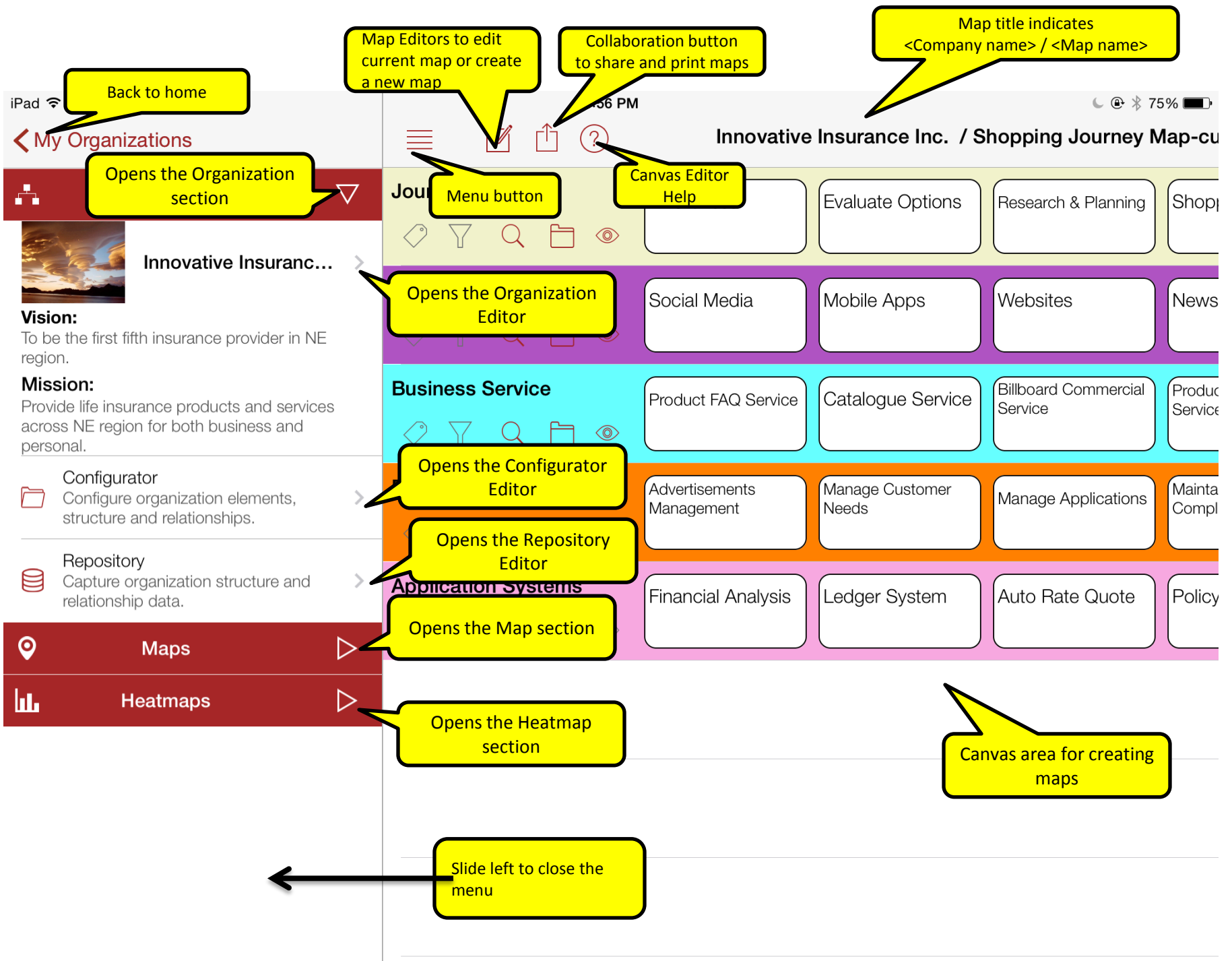


Enterprise Evolver

Canvas Editor at a glance







Innovative Insurance Inc. / Shopping Journey Map-current

Journey Stages



Awareness

Evaluate Options

Horizontal Scrolling

Shopping

Post Purchasing

Touchpoint



Social Media

Mobile Apps

Websites

News Paper

Agents

Business Service



Expand/Collapse row: when collapsed the row shows only the child record; when expanded has a row for each level of the hierarchy

Catalogue Service

Billboard Commercial Service

Product Search Service

Product Detail Service

Quote Appl Service

Business Capabilities



A

Explore to view consolidated view of all relationships

Manage Customer

Manage Applications

Maintain Claim Compliance

Manag

Application Systems



Text search in this row

Ledger System

Auto Rate Quote

Policy Issuance

Catalogue Module

Sigma Rati
Ver 2

Filter by tap selection

Filter by tag (Opens a popover list to select from)

Vertical Scrolling is enabled when the rows exceed the screen size

Expand/Collapse Operation

iPad

3:52 PM

75%



Innovative Insurance Inc. / Shopping Journey Map-current

Journey Stages



Awareness

Evaluate Options

Research & Planning

Shopping

Post Purchasing

Touchpoint



Social Media

Mobile Apps

Websites

News Paper

Agents

Business Service



Product FAQ Service

Catalogue Service

Billboard Commercial Service

Product Search Service

Product Detail Service

Quote Appl Service

Business Capabilities



Tap on an item to view the hierarchy of the item.

Claim Management

Manage Claim Handling



Maintain Claim Compliance

Manage Claim Tasks

Manage Claim Settlement

Manage Claim Disbursements

Maintain Claims

When the view is expanded, tapping/selecting an item of top level automatically shows only their children. When an item is selected the background color changes to red and the font color changes to white bold. The expand icon  is changed into an hierarchical icon .

Just tap outside (i.e. deselect) to view all items again.

Application Systems



Financial Analysis

Ledger System

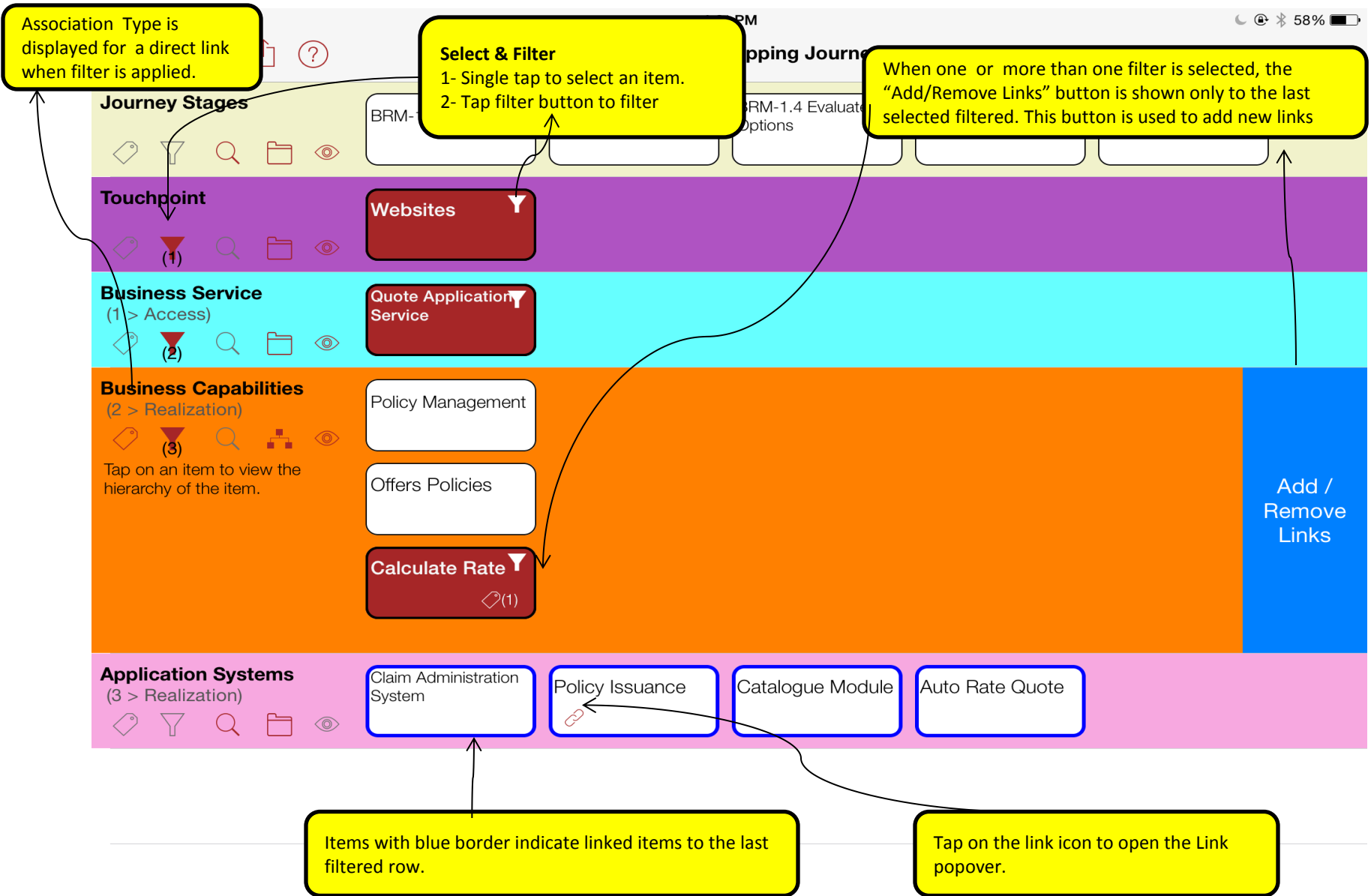
Auto Rate Quote

Policy Issuance

Catalogue Module

Sigma Rati
Ver 2

Filter Operation



Search Operation

iPad 1:51 PM 91%

Innovative Insurance Inc. / Shopping Journey Map-current

Touchpoint

Social Media Mobile Apps Websites News Paper Agents

Business Service

Product Search Service Product Detail Service Quote Appl Service

Business Capabilities

Maintain Claim Compliance Manage Claim Tasks Maintain Lc Information

Tap here to open/close the search area.

When the search is on the icon shows the state (with color changes to red).

Search operation can be performed after the expanding the row.

After search is performed, filter and tag operation can be executed.

Q W E R T Y U I O P

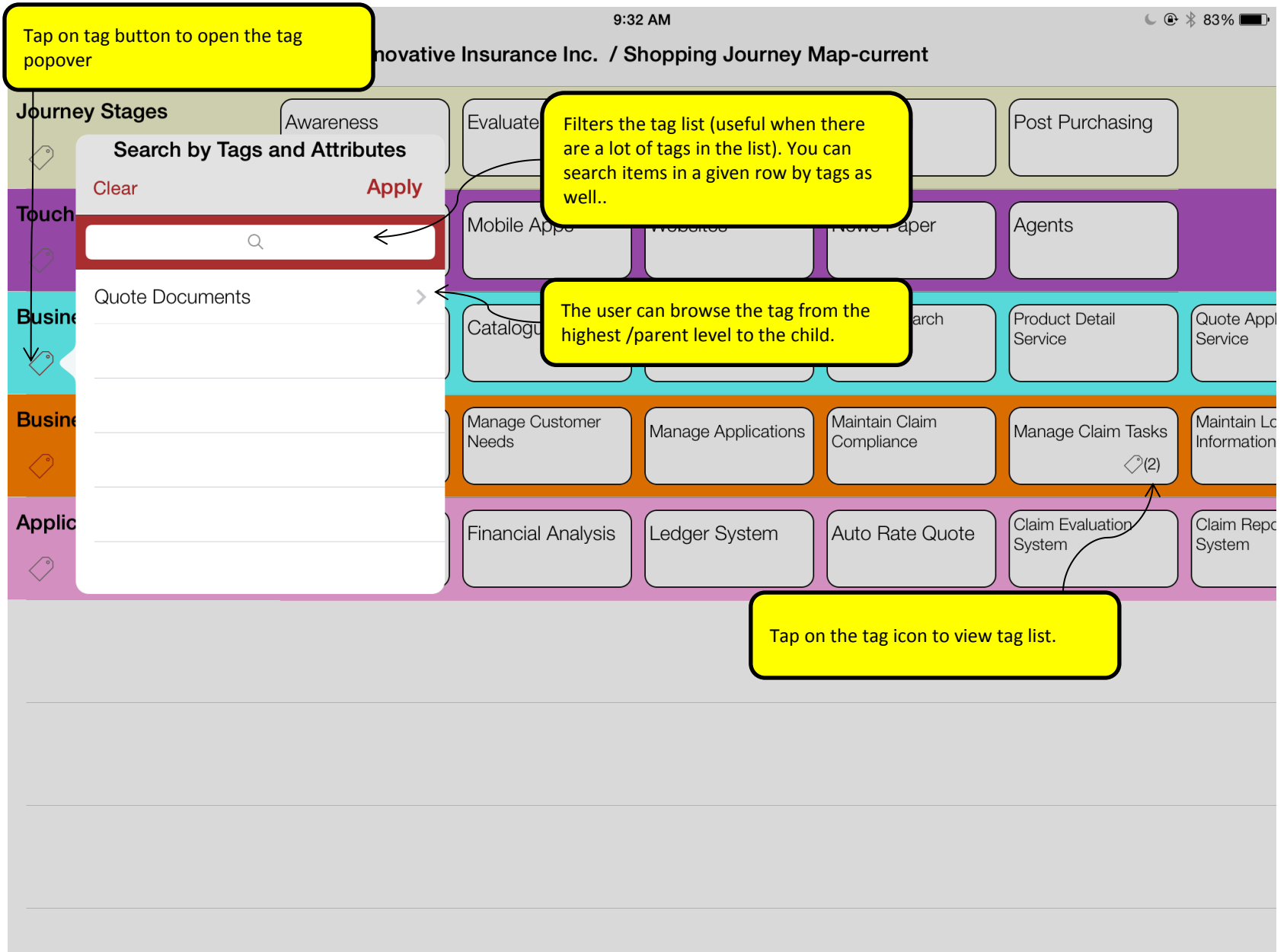
A S D F G H J K L Search

↑ Z X C V B N M ! , ? .

.?123 .?123

Search

Tag Operation



Tag and Filter operations

iPad 9:56 AM 78%

Innovative Insurance Inc. / Shopping Journey Map-current

Journey Stages

Awareness Evaluate Options Research & Planning Shopping Post Purchasing

Touchpoint

Websites

Business Service

Quote Application Service

Add / Remove Links

Business Capabilities

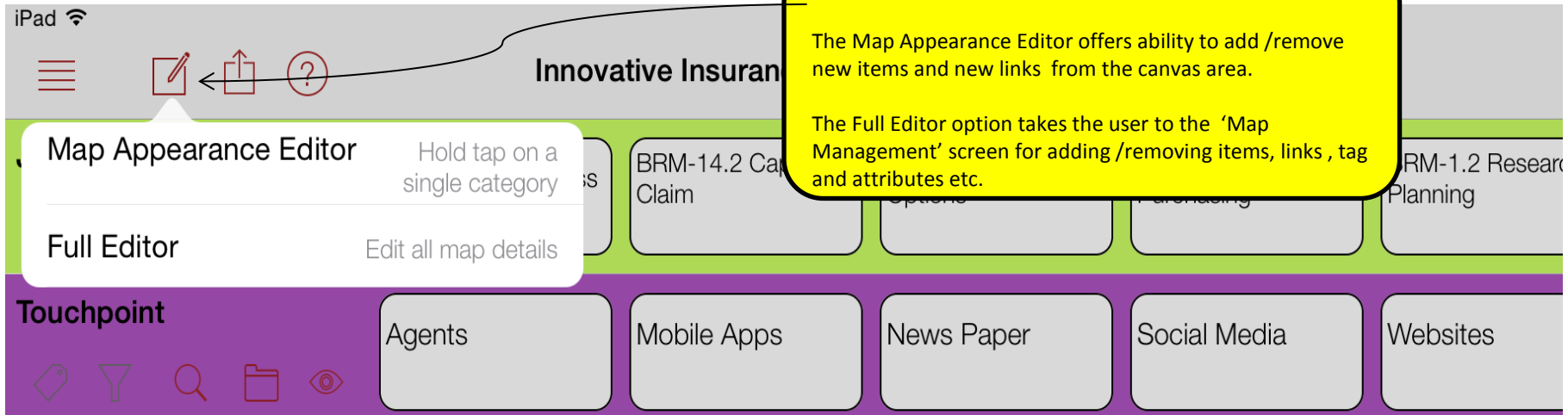
Maintain Claim Compliance Calculate Rate Determine Eligibility Initiate Application Maintain Claims

Application Systems

Claim Registration System Claim Reporting System Claim Administration System Catalogue Module

Filter can be applied after tag operation is applied. You can also use expand icon after tag is applied and search operation as well.

Canvas Editor Options



Map Appearance Editor (Add/Remove Items)

iPad 10:35 AM 100%

[Close Map Appearance Editor](#) Innovative Insurance Inc. / Shopping Journey Map-current [Go to full Editor](#)

Journey Stages

Awareness	Evaluate Options	Research & Planning	Purchasing
-----------	------------------	---------------------	------------

Touchpoint

Social Media	News Paper	Agents
--------------	------------	--------

Business Service

Customer Services	Product FAQ Service	Catalogue Service	Billboard Commercial Service	Product Search Service
-------------------	---------------------	-------------------	------------------------------	------------------------

Business Capabilities

Tap on an item to view the hierarchy of the item.

Business Management	Product Management	Marketing Management	Customer Interaction Management	Policy Management
Manage Education	Infrastructure	Develop Products	Manage Claim Loss	Policy Information
Advertisements Management	Manage Customer Needs	Manage Applications	Maintain Claim Compliance	Manage Claim Task

Application Systems

Claim Registration System	Financial Analysis	Ledger System	Auto Rate Quote	Claim Evaluation System
---------------------------	--------------------	---------------	-----------------	-------------------------

Annotations:

- Goes back to map view
- Goes to the full editor- map management screen
- Add/Remove Items button is enabled for each row to add or remove items
- Tapping on the 'Add/Remove Items' button changes the row state into an edit mode; this feature enables adding/removing an item from the current map.
- Current selected items are checked, unselected items are not checked.
- When finished the user taps on "Done" button to go back to the previous state (view only).

Buttons: Add / Remove Items, Done

Map Appearance Editor (Add/Remove Links)

iPad 1:02 PM 98%

Innovative Insurance Inc. / Shopping Journey Map-current

Journey Stages

Awareness Evaluate Options Research & Planning Shopping Post Purchasing

Touchpoint

Websites

Business Service

Quote Application Service

Business Capabilities

Claim Management

Manage Claim Handling

Maintain Claims

Application Systems

Claim Registration System Financial Analysis Ledger System Auto Rate Quote Claim Evaluation System Claim Repc System

Done

When a filter is selected, the "Add/Remove Links" button is enabled to allow links edits.

Tapping on the 'Add/Remove Links" button disable (greyed out) all those rows which are not associated directly with the filtered row category and enable the associated row in an edit mode.

When a filter is selected, the "Add/Remove Links" button is enabled to allow links edits.

Tap on an item to view the hierarchy of the item.

The row link icon is a switch to turn on/off links associations between categories. After tapping on it, the row changes state and the items can be linked with a tap.

Current linked items are visible and checked; unchecked items can be checked to create a link between the filtered item and the unchecked items.

[< Back](#)

Map Editor > Shopping Journey Map-current

Edit to reorder
categories.

Map Management

Map Management

Edit

Activity

Edit to add new
category and reorder
categories.

Touchpoint

Business Service

Business Capabilities

Application Systems

Select items to build your map. Link items from other categories and tag if
needed.

Edit

Claim Handling

Policy Handling

Quote Handling

Shopping Activities

Tap Next to view
the next level of
data.

Map Full Editor- Decoration and Association

Back to Canvas Editor

Back

Map Management

+

Map Management

Done

Activity

Touchpoint

Business Capabilities

Application Systems

Drag up/down to reorder

Add a new category (row)

With this feature users can add more categories.

Business Capabilities

Show on Map

Show on Map

Row background color

Item Color

Item Shape

Display name

Show ID on map

Associated to

Application Systems

Can also be associated to

Activity

Skills

Phases

Business Information

Decorating categories in the canvas by changing the background color, shapes etc. User can also hide a category and change the name of the category.

Name of the category to be displayed on the map

Switch on to show the unique ID of the category

Association area:

Users can use this area to associate and dissociate categories. Association are created from the Configurator editor and here associations are used to connect two categories. This connection helps in filtering and searching data on a map.

Dissociate

Associate

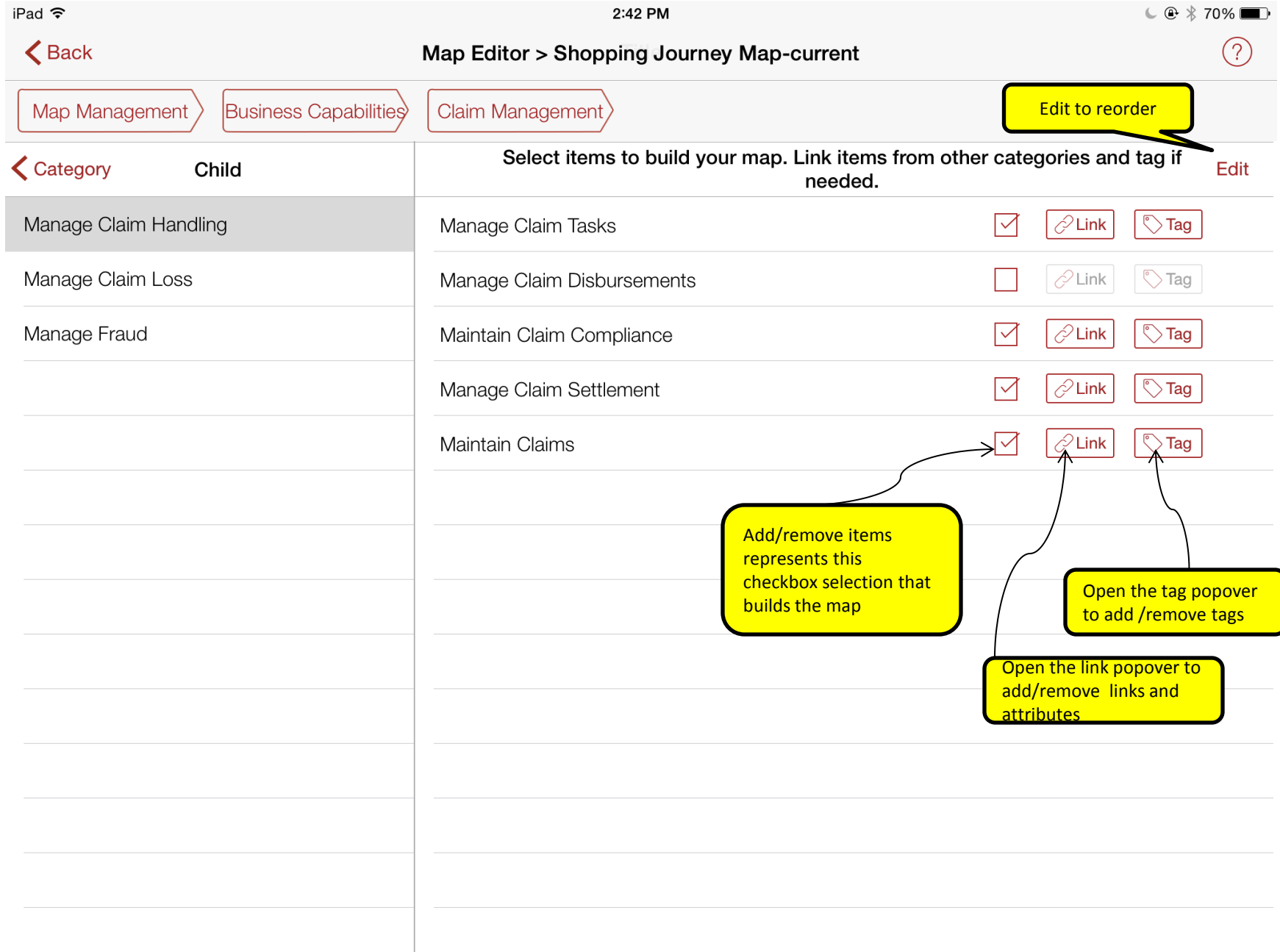
Associate

Associate

Associate

Tap to view "association" hints

Map Full Editor- Linking and Tagging



Map Full Editor- Linking and Tagging

iPad

8:42 AM

57%

[< Back](#)

Map Editor > Shopping Journey Map



Map Management

Business Capabilities

Claim Management

[< Category](#)

Child

Select items to build your map. Link items from other categories and tag if needed.

[Edit](#)

Manage Claim Loss

Manage Claim Handling

Manage Fraud

Manage Claim Disbursements

Maintain Claim Compliance

Manage Claim Settlement

Maintain Claims

Manage Claim Tasks

Links to Maintain Claims

Application Systems

Claim Registration System

Catalogue Module

Tags to Maintain Claims

Inspection Photographs

Inspections Videos

Open to view links and tags

Explorer- Summary View

Close focus view (goes back to the standard map view)

Close

1:33 PM

Innovative Insurance Inc. / Business Capabilities

Dataset > All Maps

You can choose to view relationships from all maps or single map summary.

Id CAP-9.1.1

Name Maintain Claims

Description This capability offers ability to register a claim, capture customer content information, and close a claim.

Maintain Claims

Functionalties

Application Systems

Business Information

Activity

This area shows the selected item summary (show all custom defined fields also)

Name	Description	Start Date	End Date	Object State
Claim Registration System		26 Jun 2014		Active
Claim Registration System		26 Jun 2014		
Catalogue Module		30 Jul 2014		
Catalogue Module		30 Jul 2014		Active
Claim Reporting System		26 Jun 2014		Active
Financial Analysis	Financial Analysis is a business intelligent syste...	12 Jun 2014		Active
Auto Rate Quote		26 Jun 2014		Active

Sort function opens a popover for user defined sorting data.

Open the tabular records in full page.

Filter function to filter records by columns/fields.

Horizontal Scrolling